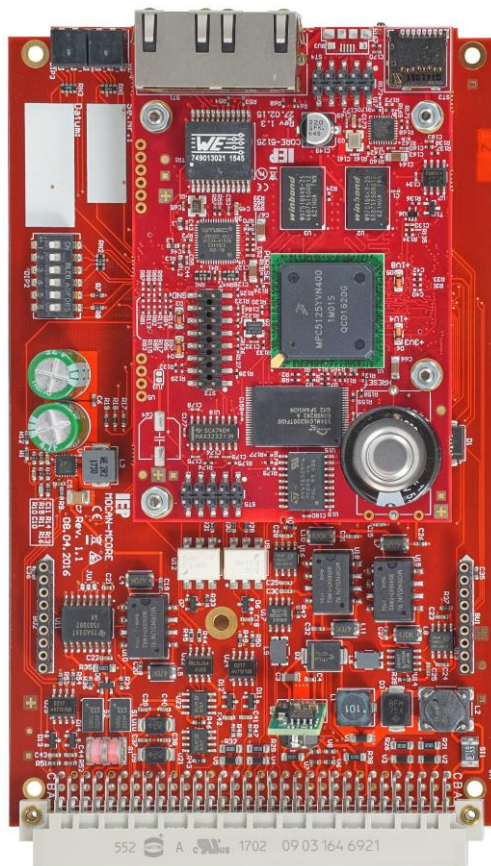


# MOCAN-M2

OEM PLC with CAN and network



The **MOCAN-M2** is an OEM building block for custom made PLCs and can be used as intelligent subsystem in Ethernet- and CAN-based networks. With up to two independent CAN channels (2.0b), up to 4 serial interfaces as well as digital inputs and outputs, **MOCAN-M2** offers all substantial basic functions of a PLC.

The **MOCAN-M2** is based on our powerful Core-5125 module. With the realtime operating system RTOS-UH and the programming languages ANSI-C, PEARL or IEC 61131-3, even complex control problems are solved quickly and reliably.

Different board variants offer a scope of service adapted to the problems with optimal cost-efficiency.

**Network  
CAN**

**Realtime**



---

## Interfaces

Two Ethernet-Interface integrate the **MOCAN-M2** into the factory network. A TCP/IP protocol stack is in the standard scope of supply; FTP, Telnet, http are supported. An optional OSI stack serves for the integration e.g. into control concepts based on the SINEC-H1. The interface status is signaled by LEDs.

CAN interfaces provide for integration on field bus level as well as for I/O expansion. All Baud rates up to 1 Mbaud are supported.

Up to 4 asynchronous serial interfaces can be used for data exchange with external devices.

## Inputs Outputs

The isolated 24 V inputs are fed to port pins of the processor and support high-level functions like interrupts, counter, etc.

The isolated high-side outputs 24 V / 0.5 A are short circuit protected and capable of driving inductive loads.

Dip-switches and hex rotary switches can be read by software; an add-on-Interface provides for additional optional in- and outputs.

## Variants



	<b>Mocan-M2</b>
Ethernet, 10/100BaseT	2
RS-232 / RS485	1x 5-wire / 1x isolated
TTY 20 mA, passiv	2, isolated
CAN, upto 1Mbaud	2, isolated
Inputs 24V, isolated	4, with interrupt generation
Outputs 24 V, 0,5 A, high-side	2
DIP-Switch / Hex rotary switches	5/2
RTC with battery backup	Yes
RAM	128 MiB
NAND-Flash as system memory	128 MiB
Remanent storage	512 kiB FRAM
Runtime after Vcc lost	7 s, with power lost signalling
Configuration memory	EEPROM 2 KiB
µSDHC-Interface	optional
Extensions	Via Add-Ons
Firmware	Realtime operating system RTOS-UH

## Size and supply

The **MOCAN-M2** boards are delivered as 100x160 mm euro-boards, require a supply of 9..38 V<sub>DC</sub> and provide a 64-pin VG connector. Plug-in adapters allow for wall mounting as well as for mounting on DIN rails.